



Setup Guide

OnGuard Ocularis Video Add-on

Document Identification	
Product Name:	OnGuard Integration
Release Version:	Ocularis 6.0
Distribution Status:	Approved for Customer Release
Issue Date:	December 2020

PROPRIETARY AND CONFIDENTIAL INFORMATION

Information herein is proprietary information and trade secrets of Qognify Ltd. This document and the information therein, are the exclusive properties of Qognify Ltd., and shall not be disclosed, in whole or in part, to any third party or utilized for any purpose other than the express purpose for which it has been provided.

Document Approval

Role	Name	Title	Date
Author	Valerii Kharchenko	QA Engineer	12/04/2020
Reviewer			
Approval			

Revision History

Version	Status	Author	Date
0.0	For Release	Valerii Kharchenko	December 2020

Contents

1	Introduction	1
1.1	Who Should Read This Guide	1
2	Overview	2
2.1	Supported Versions	2
2.2	Project Deliverables Identification	2
2.3	Operating System Support	2
2.4	Software Prerequisites	2
2.5	Hardware Specification for Server and Client Machines	2
3	Installation and Configuration	3
3.1	Video Add-on Installation and Configuration	3
3.1.1	Installing the Video Add-on	3
3.2	Logging	5
3.3	Ocularis Configuration	5
3.4	OnGuard configuration	11
4	Supported Functionality	13
5	Using the Video Add-on	14
5.1	Adding Ocularis recorder to OnGuard	14
5.2	Viewing Video in VideoViewer/Alarm Monitoring	17
5.2.1	Viewing Live Video	17
5.2.2	Taking a Snapshot	18
5.2.3	Playing Back Recorded Video	18
5.3	Switching between PTZ presets	20
5.4	Video Tours	22
6	Notes and Known Limitations	23

List of Tables

Table 2-1: Supported Versions	2
Table 2-2: Project Deliverable Identification	2
Table 4-1: Supported Video Operations	13

List of Figures

Figure 3-1: Add-On Requirement Screen	3
Figure 3-2: Setup Type Screen	4
Figure 3-3: Installation Completed Screen	4
Figure 3-4: Verify That Needed Services Are Installed On Ocularis Recorder	5
Figure 3-5: Assigning IP To Gateway (SGS) and Transcoding Services	6
Figure 3-6 Verifying SGS module settings	7
Figure 3-7 Verifying Transcoding module settings	7
Figure 3-8: Finding Devices	8
Figure 3-9: Adding Devices	9
Figure 3-10: PTZ Camera Icon	9
Figure 3-11: Using Control to Create PTZ Preset	10
Figure 3-12: Entering Name of Preset	10
Figure 3-13: Using a PTZ Preset in OC Client	11
Figure 3-14 Verifying OnGuard license option	12
Figure 5-1: Configuring Recorder	15
Figure 5-2: Selecting Import From Recorder Option	16
Figure 5-3: Selecting Cameras for Import	16
Figure 5-4: View Live Video	17
Figure 5-5: Taking a Snapshot	18
Figure 5-6: Switching to Playback Mode	19
Figure 5-7: Setting Time Range for Playback	19
Figure 5-8: Activating PTZ Control	20
Figure 5-9: Checking the List of Presets	21
Figure 5-10: Going to Preset	21
Figure 5-11: Starting of Video Tour	22

1 Introduction

This document includes all information needed to understand, install and use the OnGuard Ocularis Video Add-on, which is the integration interface between OnGuard 7.6 and Ocularis 6.0.

1.1 Who Should Read This Guide

The information and procedures described in this document are for use by qualified Ocularis system administrators and professional services engineers.

2 Overview

The integration of Ocularis provides users with video capabilities in the OnGuard system, including:

- Showing live video
- Showing recorded video
- Capturing images (snapshots) of live/recorded video

2.1 Supported Versions

The supported versions required for this integration are listed in the following table.

Table 2-1: Supported Versions

Integration Components	Versions
OnGuard	7.6
Ocularis	6.0

2.2 Project Deliverables Identification

The project deliverable identification of this integration is presented in the following table.

Table 2-2: Project Deliverable Identification

Component	Name	Version\Comments
<i>7.6 Accessory Add-On for Qognify-Ocularis</i>	Add-on installation file	1.0.3.0

2.3 Operating System Support

The add-on supports the same Operating Systems as defined in the OnGuard documentation.

2.4 Software Prerequisites

The OnGuard Ocularis installation requires:

- .NET Framework 4.6.2
- VLC player 3.0.8 (32 bit)

2.5 Hardware Specification for Server and Client Machines

The following specification is recommended for a machine running the Add-on's client.

The minimum hardware requirements for an OnGuard server and client are sufficient for a machine running the Add-on on the server side.

For information about OnGuard minimum hardware requirements, see the OnGuard documentation.

3 Installation and Configuration

The following is the flow for installing and configuring the OnGuard Ocularis integration:

1. Install and configure the Ocularis system
2. Install and configure the OnGuard system
3. Install and configure the OnGuard Ocularis Video Add-on

3.1 Video Add-on Installation and Configuration

3.1.1 Installing the Video Add-on

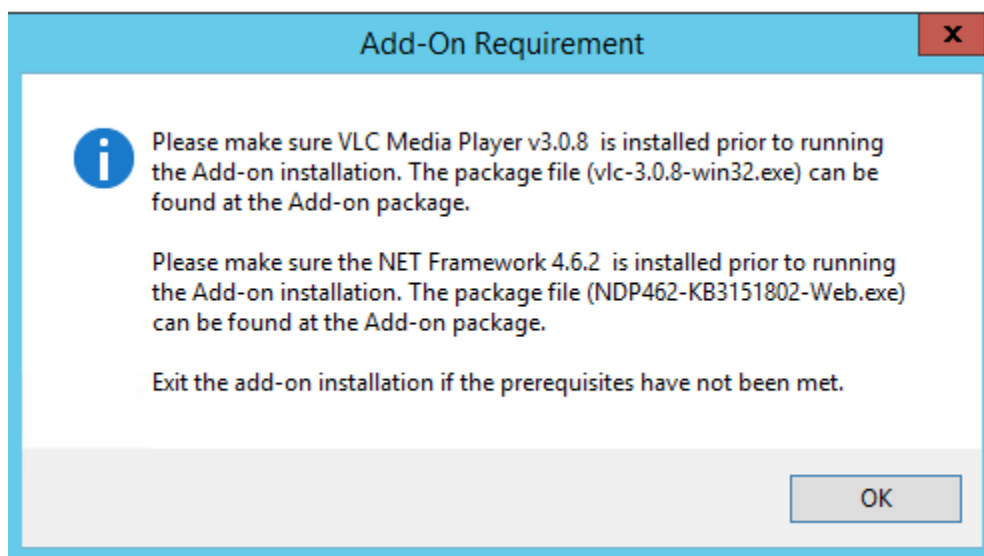
► To install the Video Add-on:

1. On each OnGuard 7.6 machine (client and server), run the 7.6 Accessory Add-On for Ocularis.msi file, as an administrator user.

NOTE: Either log in as an Administrator user, or right-click the setup file and select **Run as administrator**.

The *Add-on requirement* screen opens.

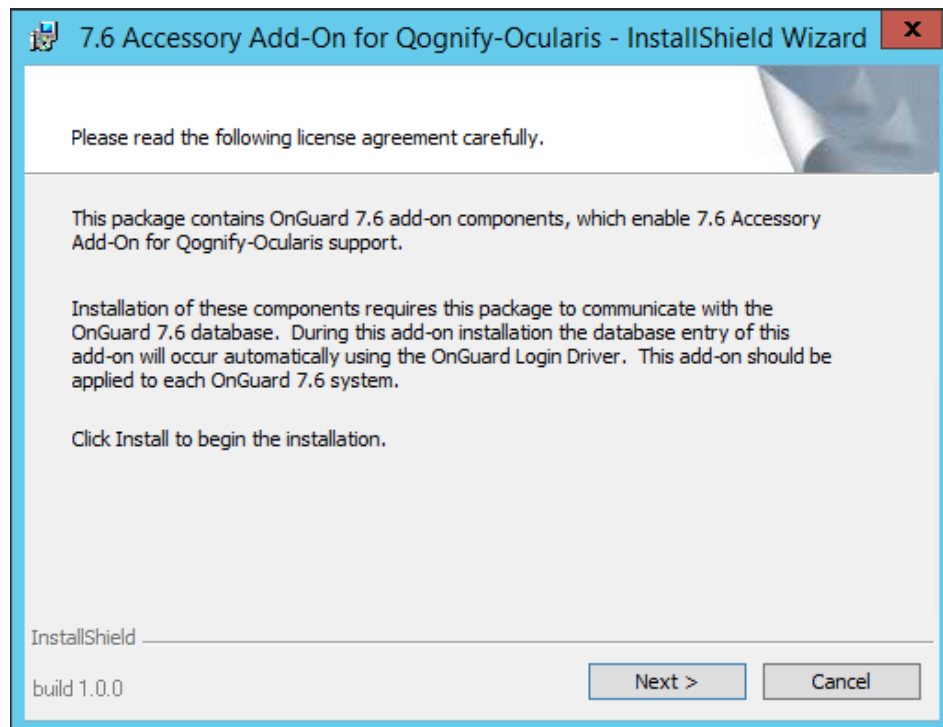
Figure 3-1: Add-On Requirement Screen



2. If prerequisites installed, click **OK** and continue installation.

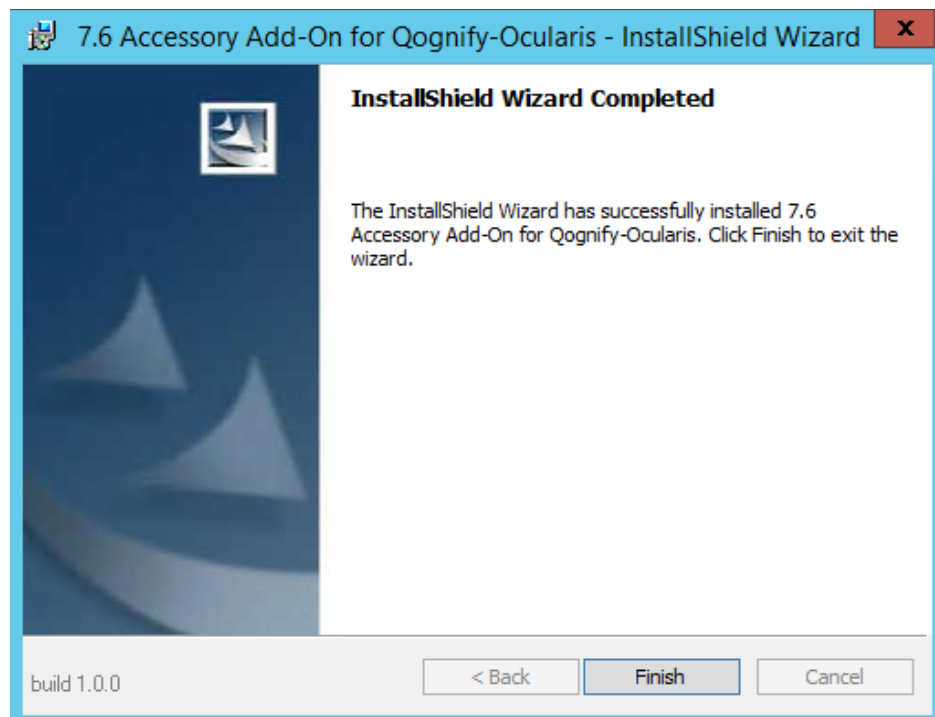
Otherwise click **OK** then **Cancel** installation and install the missing prerequisites.

Figure 3-2: Setup Type Screen



3. Click **Next**. The destination folder where the Add-on should be installed is determined automatically by the setup program.
4. Wait until the *Completed* screen displays and then click **Finish**.

Figure 3-3: Installation Completed Screen



SA

3.2 Logging

Log files, which the Add-on creates after first launch, can be found in the default OnGuard folder: *C:\Program Files (x86)\OnGuard*.

The Add-on creates two log files:

- *OcularisSGSTranslator.log*
- *CayugaWrapper.log*

3.3 Ocularis Configuration

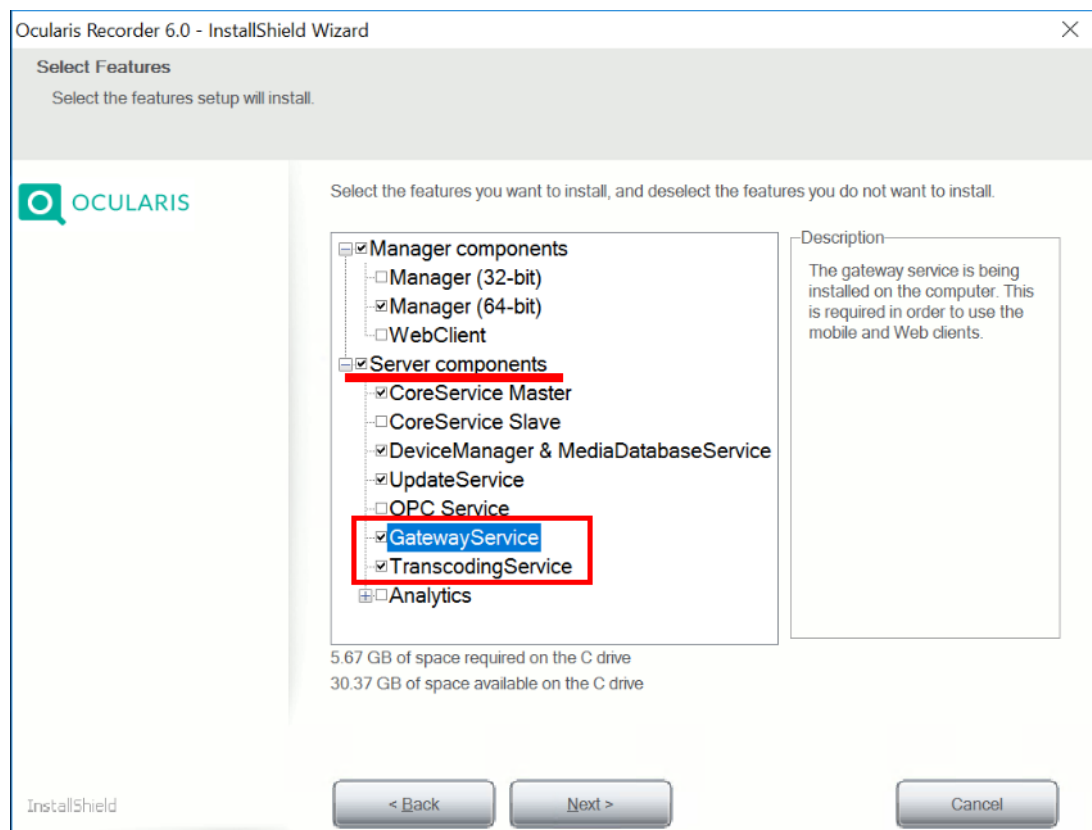
CAUTION: We do not recommend to install Ocularis Recorder on the same machine with OnGuard Server or Client. It may lead to significant additional memory usage during several live/playback video streaming in Alarm Monitoring/Video Viewer applications.

After installation, do the following:

1. Make sure that GatewayService and TranscodingService have been installed on the Ocularis machine. This is mandatory for Add-on work.

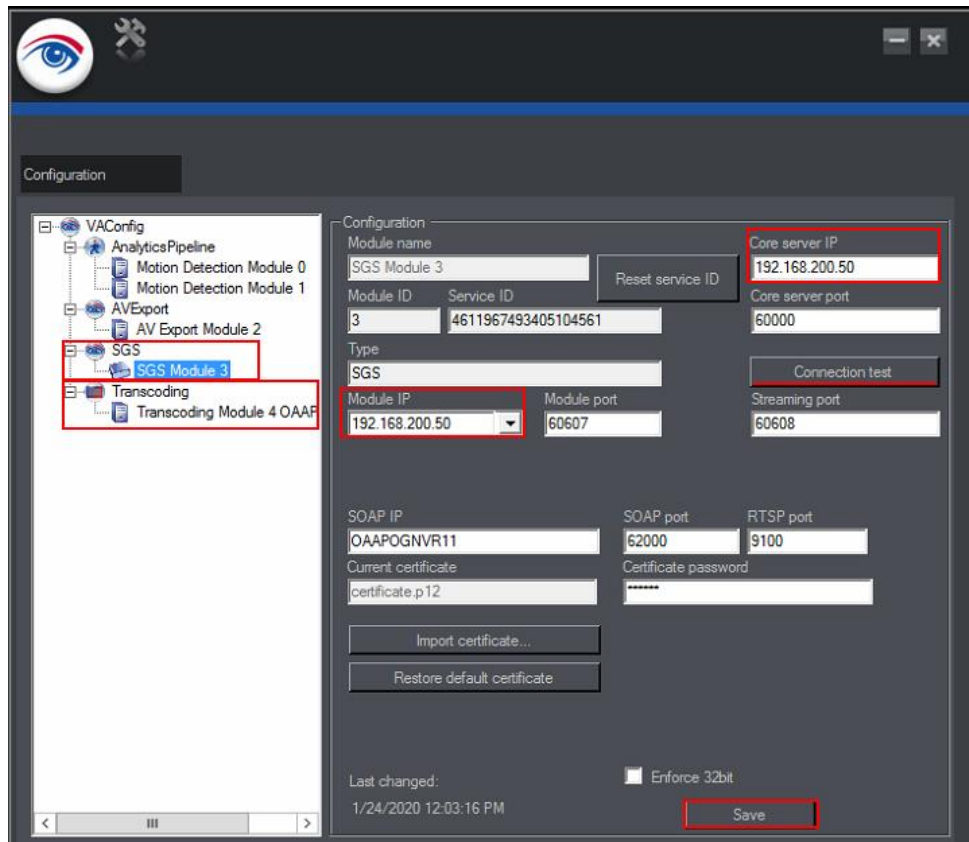
During installation of the Ocularis these services should be located in Server components section, as shown below.

Figure 3-4: Verify That Needed Services Are Installed On Ocularis Recorder



2. Open Administration VA Application and assign an IP to Gateway and Transcoding modules (IP of Ocularis machine).

Figure 3-5: Assigning IP To Gateway (SGS) and Transcoding Services

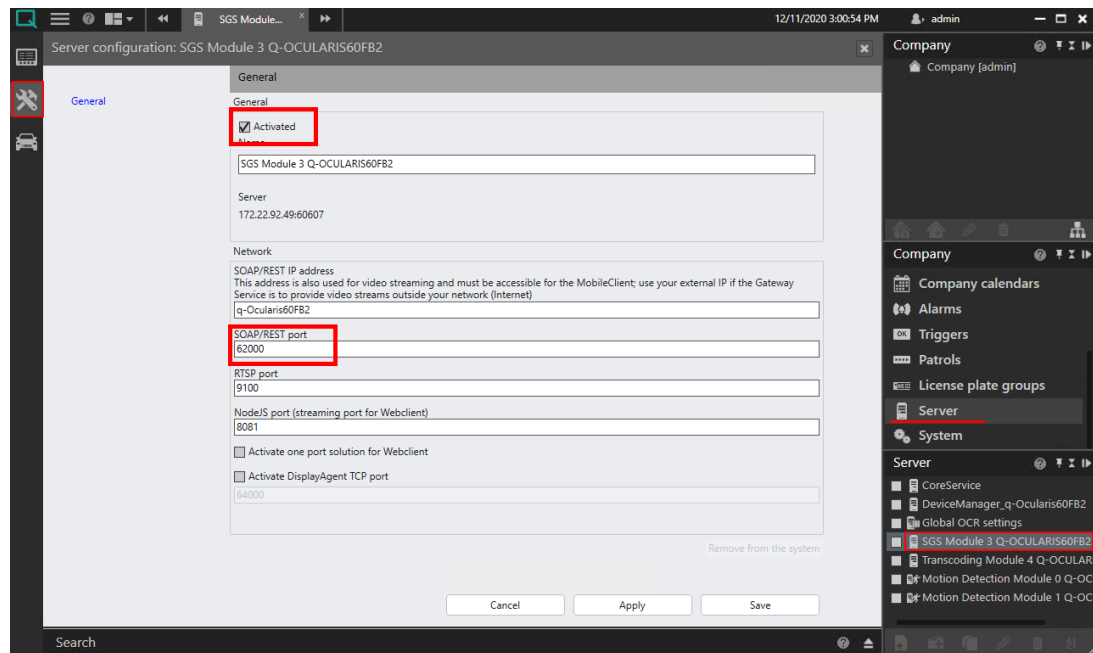


3. Verify that SGS and Transcoding modules configured correctly

► To check the configuration of SGS and Transcoding modules:

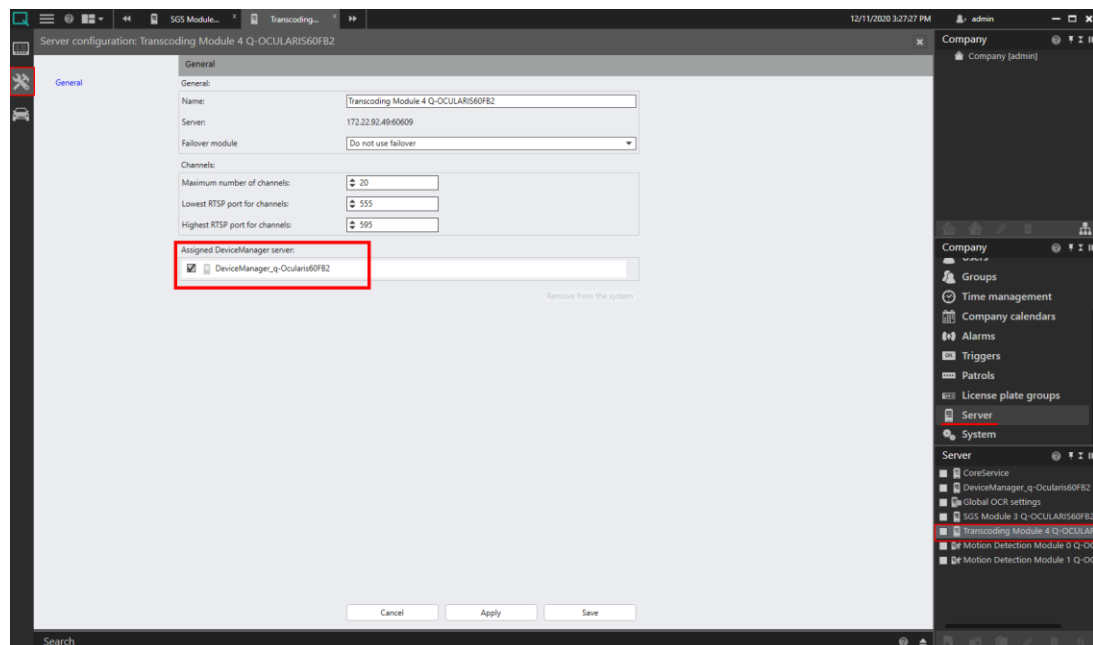
1. Open **OC Recorder Manager** application and switch to Configuration Mode.
2. Under **Company** menu on the right side select **Server**
3. In **Server** service at the bottom right select **SGS Module**
4. In opened **General** settings menu verify that **Activated** check-box marked and SOAP/REST port is set to **62000**

Figure 3-6 Verifying SGS module settings



5. Once checked, click **Apply** and **Save**
6. Then select **Transcoding Module** from **Server** menu
7. In its **General** settings verify mark check-box **Assigned Device Manager server**.

Figure 3-7 Verifying Transcoding module settings



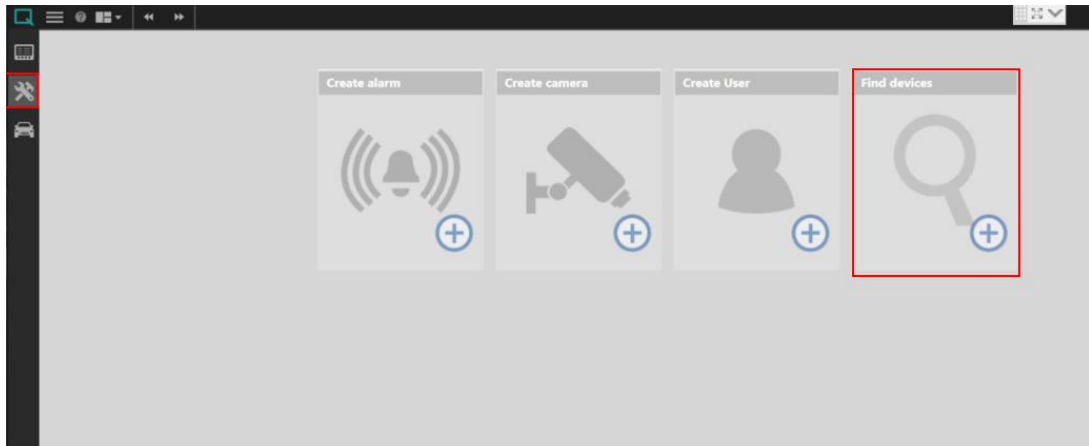
8. Once marked, click **Apply** and **Save**

4. Add cameras to the Ocularis Recorder.

► To add cameras:

1. Open **OC Recorder Manager** application and switch to Configuration Mode.
2. Click the **Find devices** option.

Figure 3-8: Finding Devices

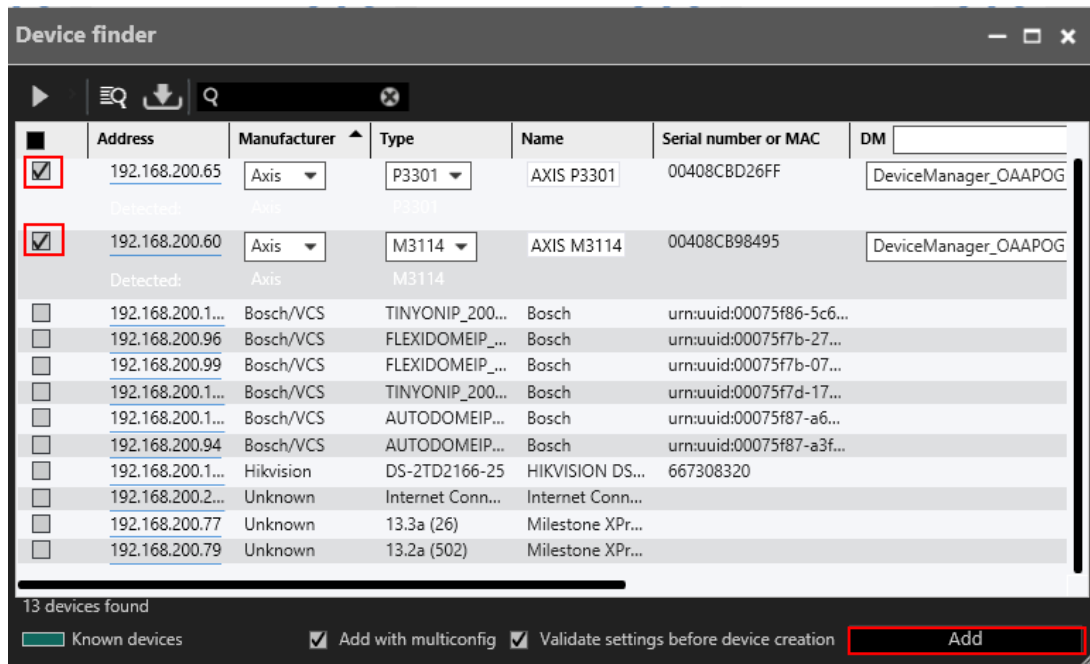


NOTE: If you see a pop-up message that SSDPSRV Discovery service is not started, it is better to start in order to find more cameras. Open **Services** and start it:

SQL Server VSS Writer	Provides th...	Running	Automatic	Local Syste...
SSDP Discovery	Discovers n...	Running	Automatic	Local Service
Still Image Acquisition Events	Launches a...		Manual	Local Syste...

3. When the list of devices appears, select the required devices and then click **Add**.

Figure 3-9: Adding Devices

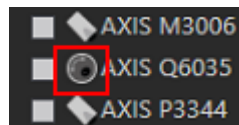


Once cameras been added, it is possible to configure PTZ presets.

► To configure Presets for PTZ cameras:

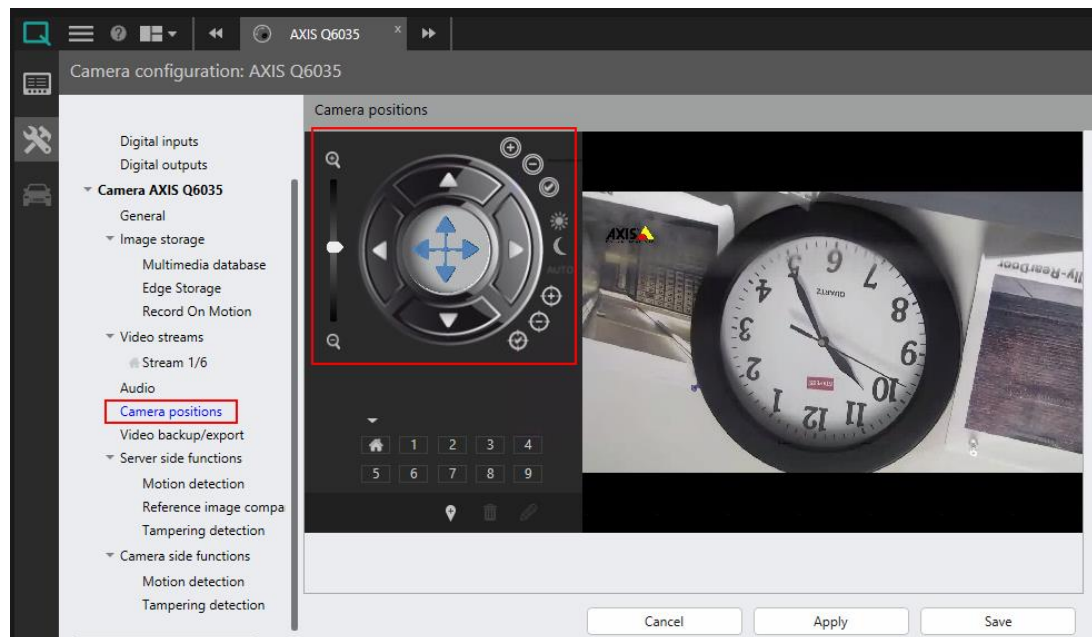
1. From camera list, at the bottom right, select a PTZ camera. PTZ cameras have the special icon shown below. Click it.

Figure 3-10: PTZ Camera Icon



The *Camera configuration* window opens for the selected camera.

2. In the *Camera configuration* window, under *Video Streams* select **Camera Positions**.
3. Using the PTZ control, rotate the camera to the required position.

Figure 3-11: Using Control to Create PTZ Preset


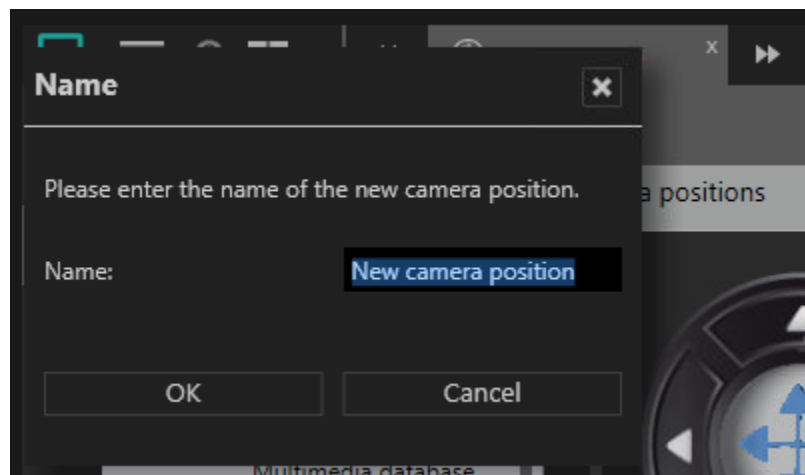
4. When done, click the  icon. The *Name* window displays.
5. In the pop-up *Name* window specify the preset name and click **OK** to save it.

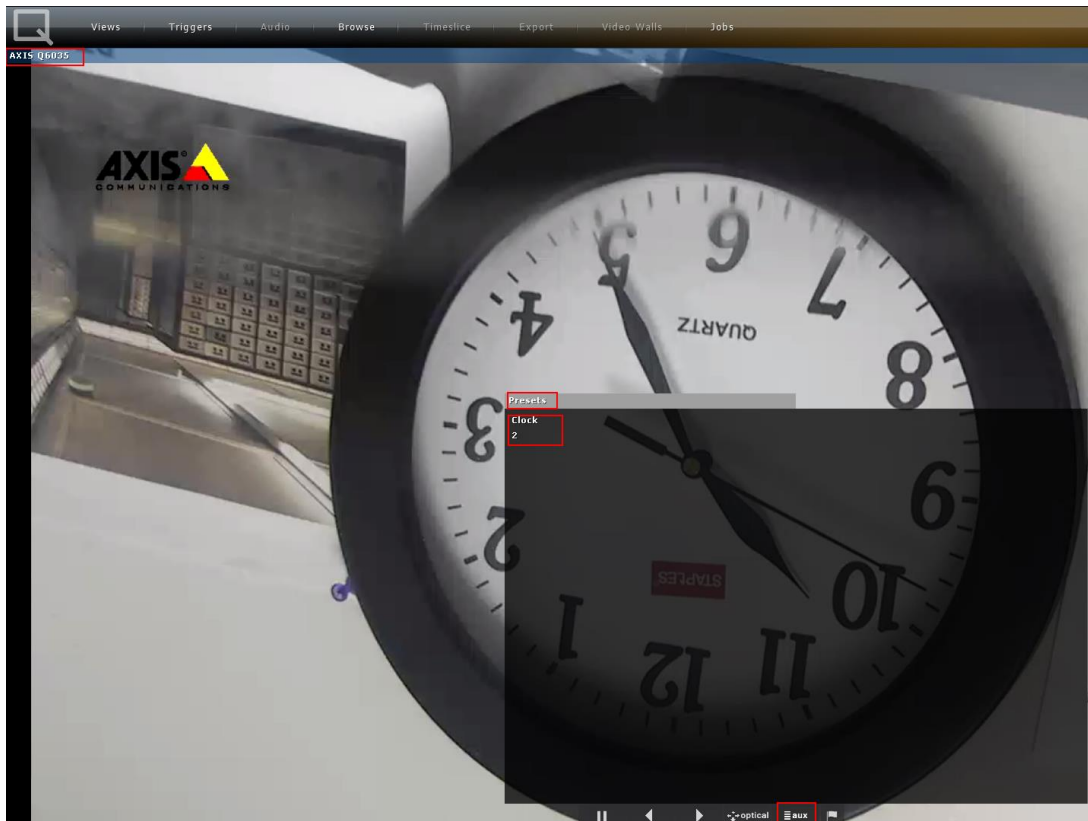
Figure 3-12: Entering Name of Preset

6. Once preset(s) are ready, click **Apply** and then **Save**.

► To check presets in Ocularis Client:

1. Open the **OC Client** application and choose a PTZ camera.
2. At the bottom menu click **aux**. The *Presets* window appears with list of configured presets. Click a particular preset to move the camera to it.

Figure 3-13: Using a PTZ Preset in OC Client



3.4 OnGuard configuration

In order to make OnGuard work with cameras, it must have proper license.

► To check the OnGuard license:

1. Open the **License Administration** application and log in to it
2. Press **View** button to check license options
3. Scroll down to **Digital Video** chapter
4. Ensure that option **Maximum Number of OAAP/LDVR Camera Channels (DV-CH-XXX)** enabled.

Figure 3-14 Verifying OnGuard license option

License Administration

q-OnGuard76-2

Installed Licenses

Lenel OnGuard 7.6 Enterpri

View Delete...

Install New License

View Log

Administrator Properties

Log Out

Name	Expires	In Use / Max.	Value
(OBSOLETE) Maximum Number of SkyPoint NetDVMS Channels (NetDVMS-xxxx)			0
Maximum number of NetEVS camera channels (SP-EVS-1C)			0
(OBSOLETE) Maximum Number of goVision Camera Channels (xLNVEF-xxxxxx)			0
Maximum number of camera channels across all goVision Release 2 / TruVision series recorders (2LNVEF-XXXXXX / TVN/R-XXXXXX)			0
Maximum Number of UltraView OS Camera Channels (DV-UVOS-CH)			0
Digital Video Enabled (SWG-DV)			false
Digital Video Clients (SWC-DV-XX)		0 / 1	
Maximum Number of Digital Video Archive Servers (SWS-LAS)			1
Maximum Number of OAAP/LDVR Camera Channels (DV-CH-xxx)			16
Maximum Number of Milestone Partner Camera Channels (ML-ONG-VIDINT)			0
Maximum Number of LNVS - Surveillance Only Camera Channels			0
Maximum Number of LNVR - Recorded Camera Channels (SW-LNR-CH1)			16
(OBSOLETE) Maximum Number of LDVR Audio Channels (DV-LDVR-CHA1)			16
Maximum Number of LNVR Audio Channels (DV-LNR-CHA1)			1

4 Supported Functionality

Video operations supported by this integration are outlined in the table below.

Y equals yes

N equals no

Table 4-1: Supported Video Operations

Video Systems	
System Communication	
Connect and authenticate	Y
Connect/disconnect status detection	Y
Events/Alarms	
Motion detection	N
Content analytics	N
Communication lost	Y
Discovery (Import)	
Cameras discovery (import) from recorder	Y
Manual camera adding	Y
PTZ identification discovery	Y
Presets discovery	Y
Video Capabilities	
Live video	Y
Video Player Window Resize	Y
Video Player Window Moving	Y
Pre-recorded Video Playback	Y
Snapshot	Y
Change View mode (single/matrix/layouts)	Y
Live Video Tour	Y
PTZ movements	N
Zoon In/Out	Y
Presets	Y
Digital PTZ	N
Text Overlay (On screen display parameters)	N
Playback Export to AVI	N

5 Using the Video Add-on

This chapter describes how to use the OnGuard Ocularis Video Add-on.

5.1 Adding Ocularis recorder to OnGuard

Authorized users can log in to the OnGuard System Administration application to add recorders.

► To add an Ocularis recorder:

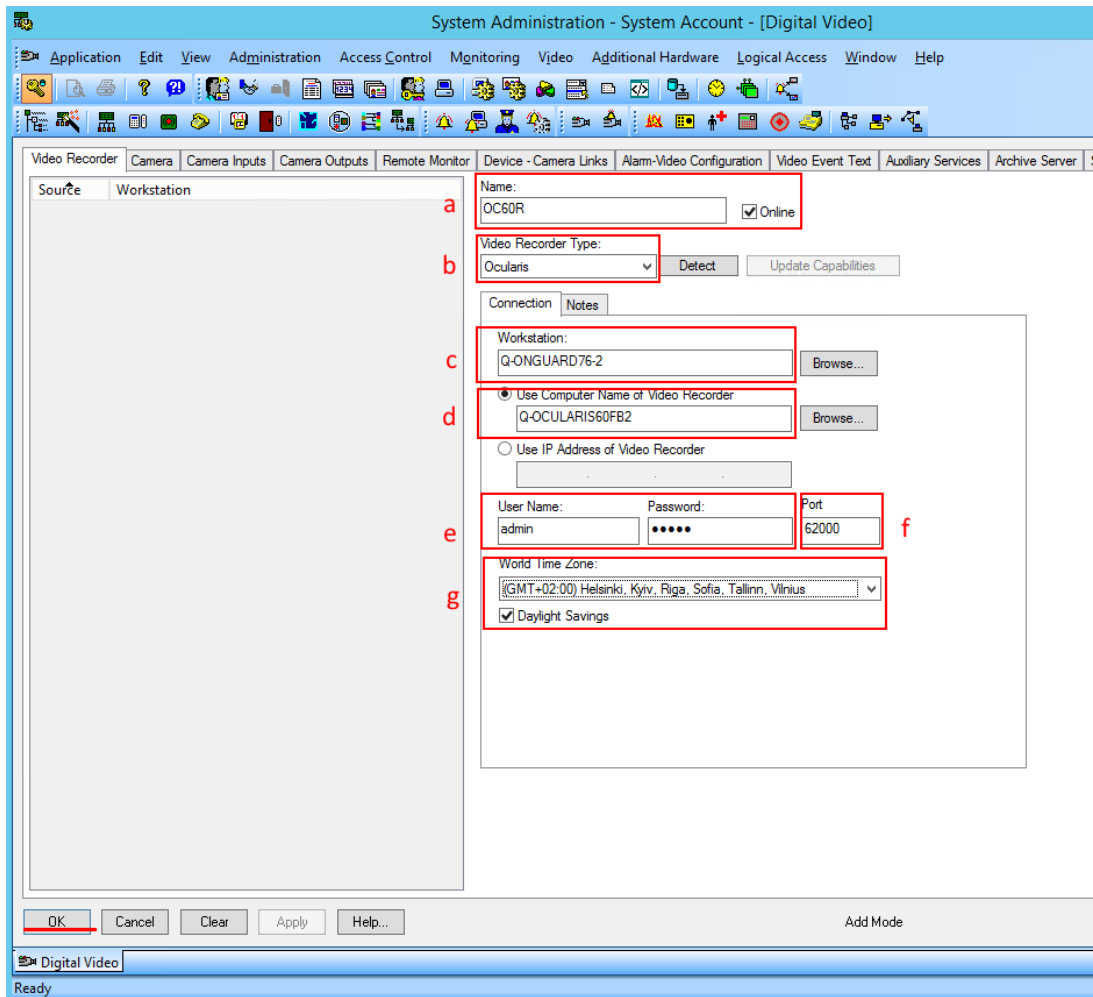
5. In the System Administration application, in the **Video** tab, select **Digital Video**.
6. In the **Video Recorder** tab, at the bottom, click **Add**.
7. In the recorder parameters area on the right, specify following:
 - a) **Name** of recorder and mark checkbox **Online** (name can be any).
 - b) In the **Video Recorder Type** field, select from drop-down list **Ocularis**.
 - c) Under **Connection** section in **Workstation** field specify the OnGuard machine **hostname**.
 - d) Mark the checkbox **Use Computer Name of Video Recorder** and specify a **hostname** of the machine with Ocularis Recorder.
 - e) In **User Name** and **Password** fields specify credentials to the Ocularis recorder.
 - f) In the **Port** field specify the port to be used for connection to Ocularis (default value is **62000**).

CAUTION: Port should be open for the Ocularis recorder machine.

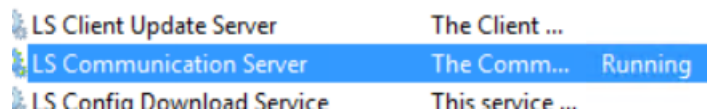
- g) In the **World Time Zone** field select the time zone corresponding to the OnGuard machine.

NOTE: Time zones of OnGuard and Ocularis machines may be different, but time between these machines should be synced.

Figure 5-1: Configuring Recorder

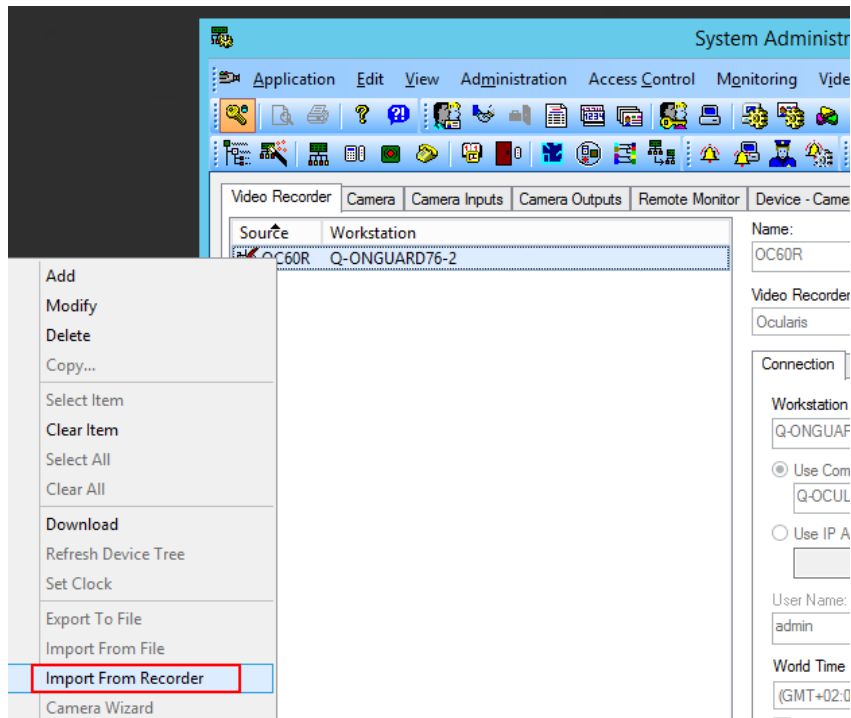


8. Click **OK** to add the recorder.
9. **IMPORTANT:** Restart the **LS Communication Server** service. Note that starting up make take several minutes.



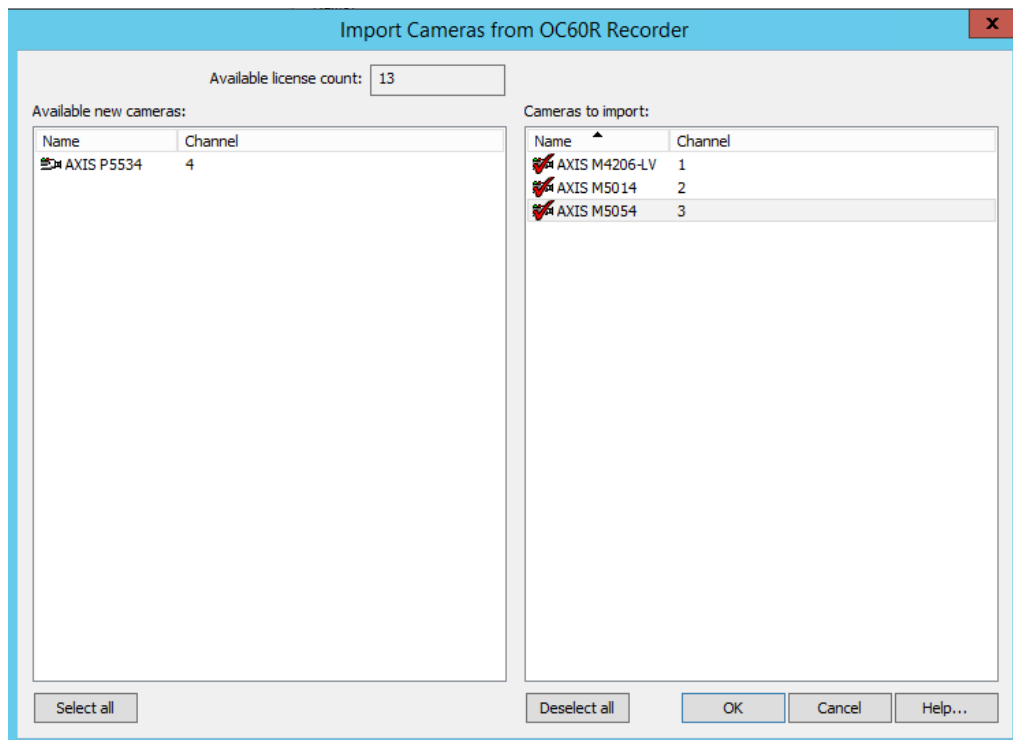
10. Once added, you can import cameras by right-clicking on a created recorder instance and selecting **Import From Recorder**, as shown below.

Figure 5-2: Selecting Import From Recorder Option



11. In the **Import Cameras** window select needed cameras by single clicking an entity (or click the **Select all** button at the left bottom to import all of them).

Figure 5-3: Selecting Cameras for Import



12. When completed, Click **OK**.

5.2 Viewing Video in VideoViewer/Alarm Monitoring

When viewing a video camera, you can:

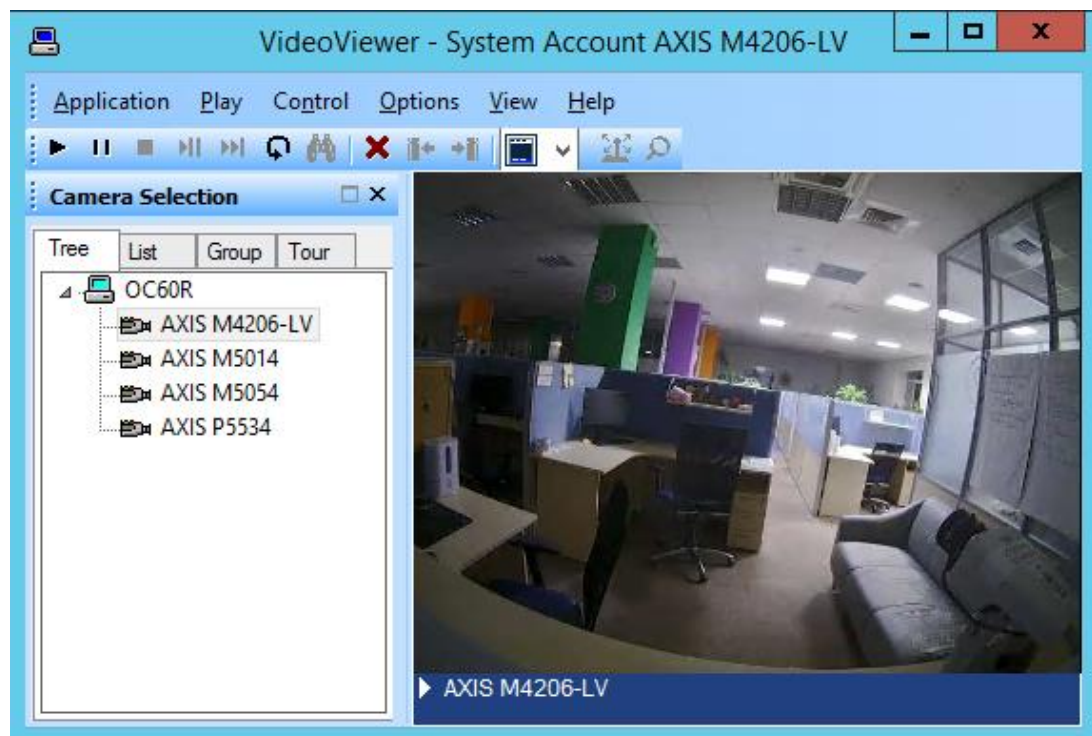
- View live video stream
- Take a snapshot
- Play recorded video (playback)
- Switching between PTZ presets

5.2.1 Viewing Live Video

Log in to VideoViewer, expand the Ocularis recorder tree on the left and select a camera by double clicking it.

When viewing live video, note that the list of available presets is retrieved from the Ocularis database. This list can only be edited in the Ocularis system.

Figure 5-4: View Live Video



User can:

- Undock Live video window by double clicking the camera name on blue bar at the bottom.
- Resize and move video player window.
- Play, Pause/Resume and Stop live video.
- Add another camera(s) live video (in matrix view) by double clicking on corresponding camera(s).
- Switch between matrix and single view and change layout.
- Remove camera video from view.

5.2.2 Taking a Snapshot

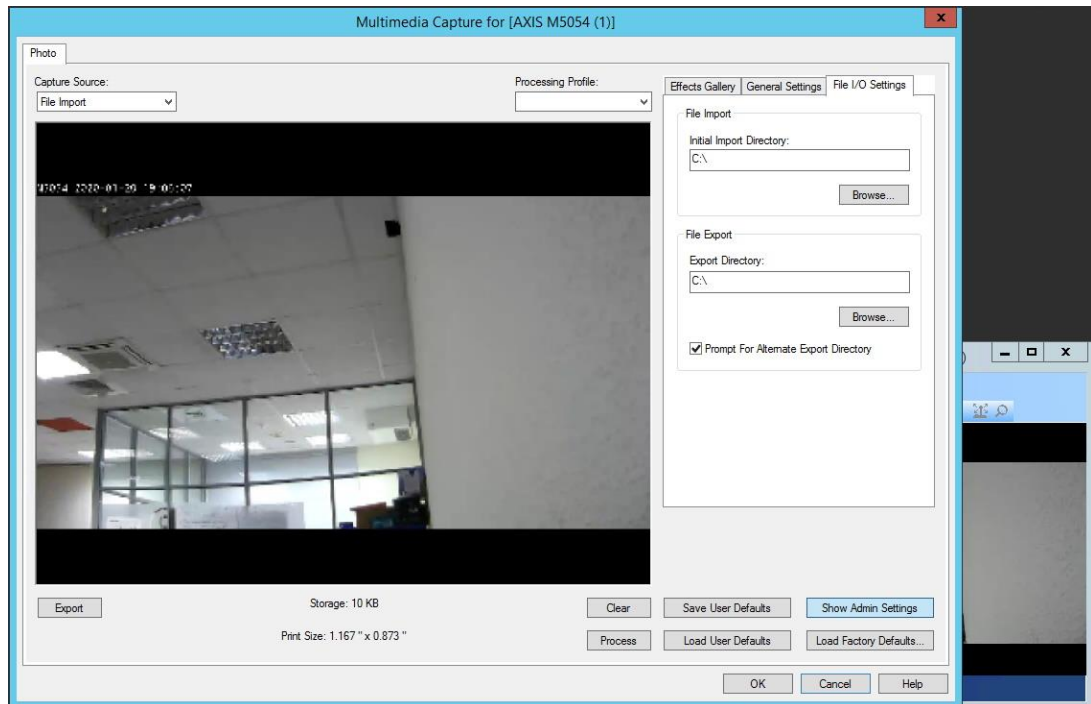
Capturing a snapshot enables you to save it to a file.

► To capture an image in the video player:

1. Select **Options -> Capture Image**, or press **Ctrl+C**.

The *Multimedia Capture* screen appears with the captured image displayed.

Figure 5-5: Taking a Snapshot



2. After clicking **Export** you can choose a location to save the captured image.

5.2.3 Playing Back Recorded Video

► To view recorded video (playback):

1. In the *video viewer* window select **Play -> Recorded** to switch to Playback mode.

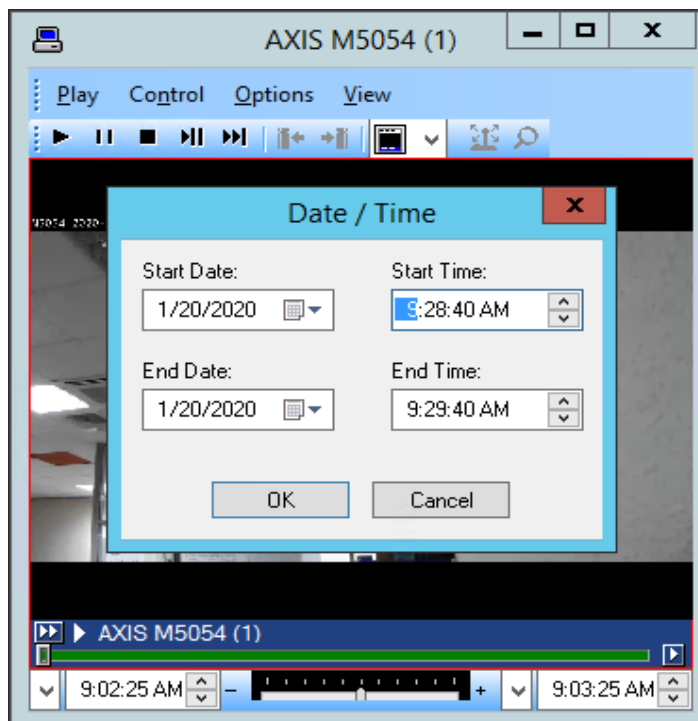
NOTE: A default Playback time range will be chosen automatically as approximately one minute before current moment.

Figure 5-6: Switching to Playback Mode



2. To choose another Playback time range select **Options -> Set Start/End Date**, and in *Date / Time* window select needed values.

Figure 5-7: Setting Time Range for Playback



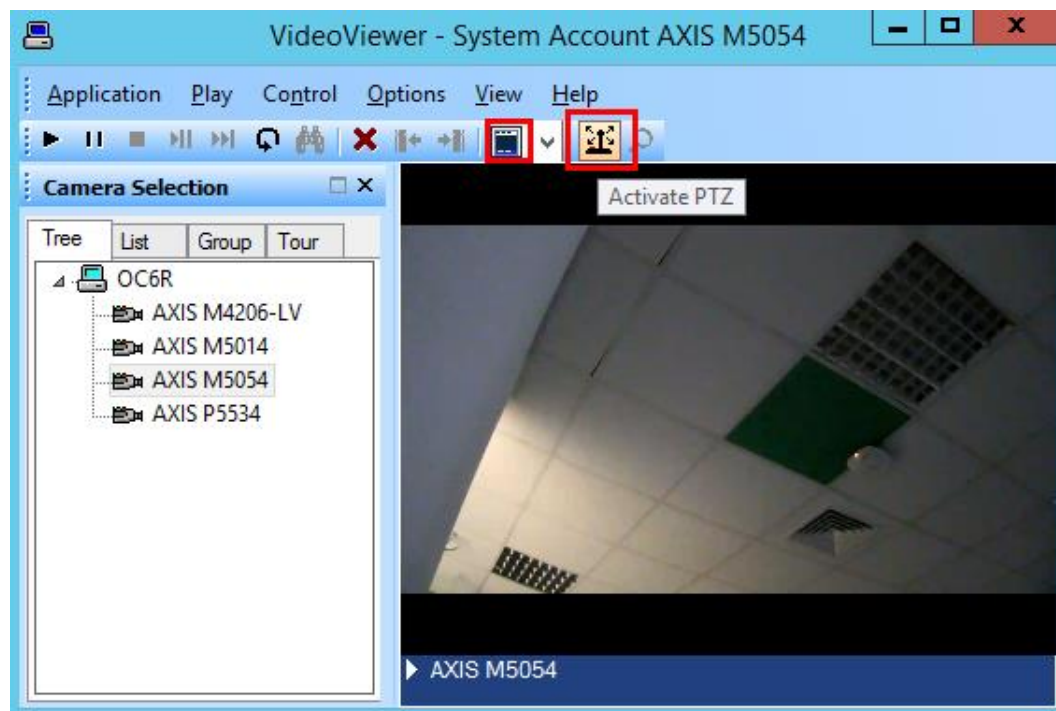
Once a recorded video is playing, you can Play, Pause/ Resume and Stop it. Other features are not supported. Refer to [Limitations](#)

5.3 Switching between PTZ presets

During Import cameras from an Ocularis recorder, the Add-on can recognize whether the camera is a PTZ or non-PTZ. For PTZ cameras the list of its presets imports as well.

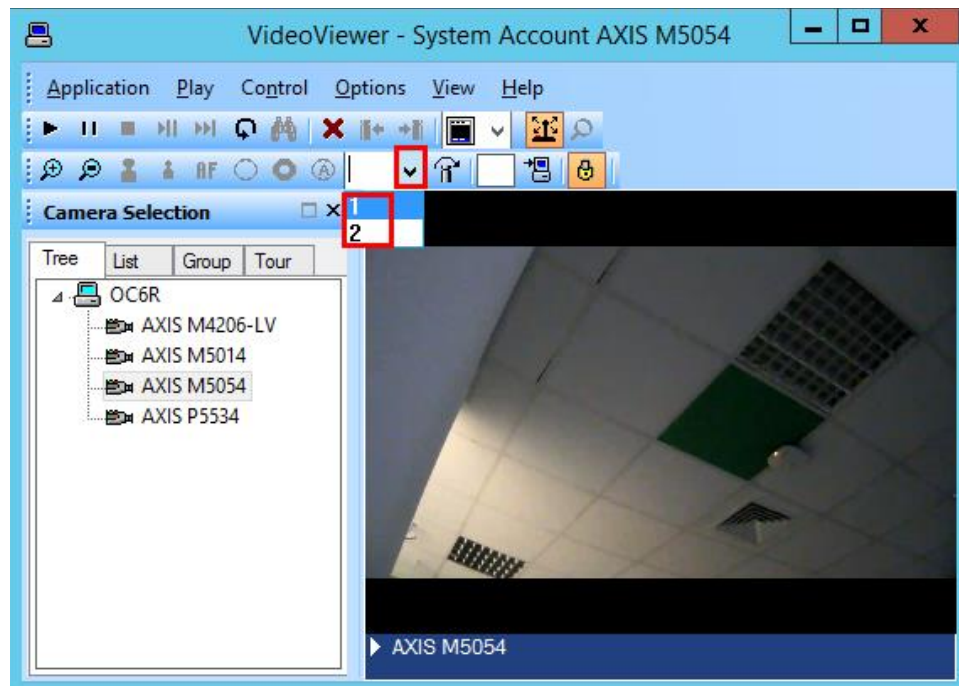
- ▶ To activate preset in the VideoViewer/Alarm Monitoring application:
 1. Ensure that your player is on **single view** mode.
 2. Click the **Activate PTZ** button (for non-PTZ cameras this button is disabled).

Figure 5-8: Activating PTZ Control



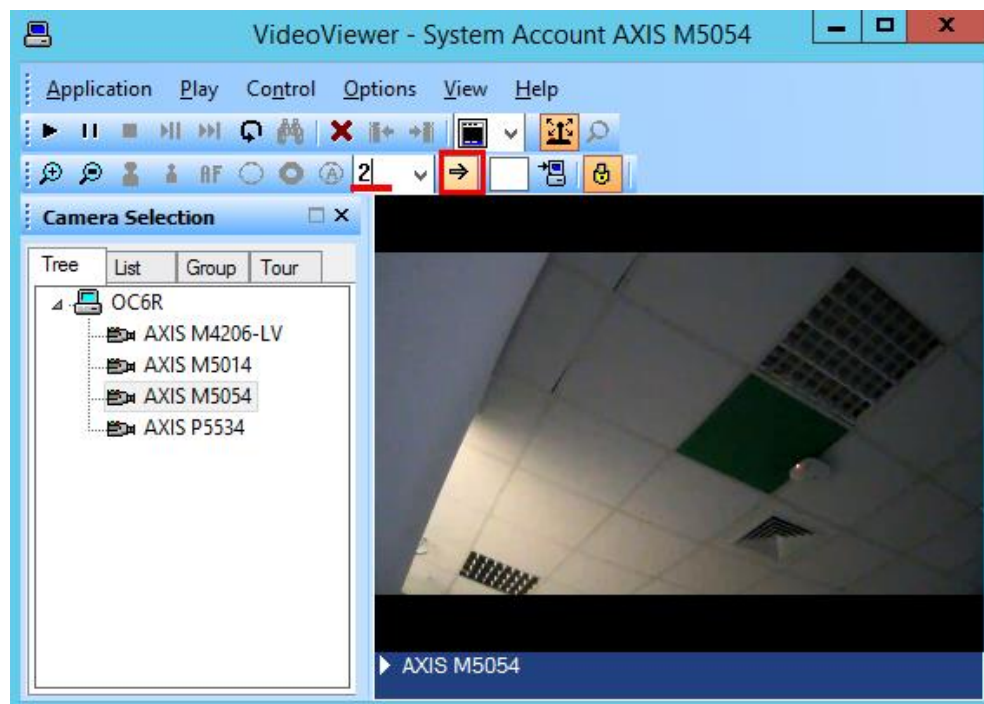
3. In the PTZ control menu that displays, click the **arrow** to see the drop-down list of PTZ presets.

Figure 5-9: Checking the List of Presets



4. Type preset number and click the **Go to preset** button.

Figure 5-10: Going to Preset

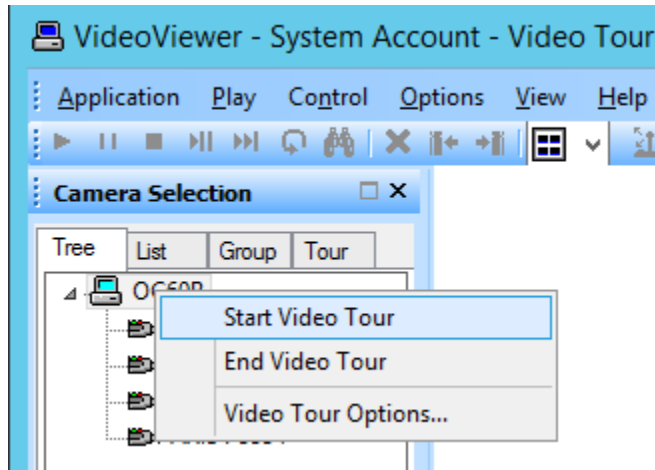


5.4 Video Tours

The OnGuard Ocularis Video Add-on supports Video tours.

- ▶ To launch a Video Tour in the VideoViewer application:
 - Right-click a *Recorder Name* node and select **Start Video Tour**.

Figure 5-11: Starting of Video Tour



6 Notes and Known Limitations

- The Playback Control panel is not working, which means that following features are not supported:
 - Playback speed cannot be changed. Constant speed is **1x**
 - Fast forward, frame forward is not supported
- PTZ movements are not supported
- Playback Export is not supported
- Any events from Ocularis to OnGuard are not supported, except communication lost events